

# COMPANY PRESENTATION

Water and Sanitation



Information & Communication Technology



Socioeconomic Studies and Research



Project and Programme Management



Agriculture and Rural Development



Infrastructure, Roads and Highways



Environment and Disaster Management



Creative Consultants International Limited  
multi-disciplinary consulting firm

# TABLE OF CONTENTS

Section	Page No
Table of Contents	01
Message from the Managing Director & CEO	02
Company Background	03
Company General Information	04
Areas of Expertise and Services of the Firm	05
- Agriculture and Rural Development	08
- Performance, Monitoring and Evaluation	09
- Socioeconomic Studies	10
- Water and Sanitation	10
- Infrastrucure, Roads and Transportation Commmunication	11
- Forestry, Environment and Disaster Management	12
- Education and Training	12
- Information and Communication Technology (ICT)	13
- Training and Capacity Building	13
- Designing, Printing and Publications	13
Company Management	14
Organizational Structure	14
Strength and Capacilities	15
Clients and Partners	16
Company Major Experiences	17
Company Professional Team	19
International Advisers	21
Company Board of Directors	22



# Message

## From the Managing Director

Dear Clients & Partners,

It is my great pleasure to say few words on behalf of Cretive Consultants International Ltd (CCIL). CCIL has taken great pride in its ability in organizing highly qualified and experienced professional team in various fields and providing consulting services around the country and abroad. CCIL has been providing excellent consulting services in various fields including agriculture and rural development, environmental and other social sectors. It also provides hardcore technology areas like agricultural extension services, water management, irrigation, engineering, transportation, energy, etc. Recently, the driven it has made an attempt to increasingly focus on the Asia-Pacific region mainly because of the scope of work it offers. We hope to share our accumulated expertise with other partners in the development efforts of the Third World countries and look forward for better development and livelihoods improvement of the society.

Md. Abdul Mannan  
Managing Director and CEO



# COMPANY Background

Creative Consultants International Ltd (CCIL) is a multi-disciplinary consulting firm in Bangladesh. It has been inaugurated by a group of highly qualified and dedicated experts in the field of development interventions.

CCIL is a limited company incorporated under the Company's Law of Bangladesh. It started its journey in the year 2008 and providing appropriate, adequate and sustainable solutions and resolution for development through innovative consultancy, originative ideas, capacity building, and training.

CCIL provides services from the stage of inception to the completion of projects like focusing on the need of clients and society. It has also the diversified actions to develop expertise and strengthen the capabilities of the clients.

CCIL has work experience in both natural and social sciences of different areas of development sectors. These are: Agriculture, Climate Change Adaptation, Environmental and Social Assessment, Baseline Surveys, Economic and Social Studies, Institutional Strengthening, Transportation, Agro-Industries, Natural Resources and Environment, Water Supply, Waste Management and Sanitation, Water Resource Management, River and Port, Information Technology (IT), Training and Education, Project Management etc.

## **Mission**

Our mission is to provide the best innovative and unique creative consultancy services and solutions to our valuable clients and partners.

## **Vision**

To become one of the pioneer professional and development consulting firms in Bangladesh.



# COMPANY

## General Information

Name of the firm : Creative Consultants International Ltd.  
Started Journey : 2003  
Registered as Joint Stock Company : 2008  
Status of the firm : Limited Company  
Country of Incorporation : Bangladesh  
Company Registration No : Incorporated under the Companies Act (Act XVIII) of 1994, No: C-72451 (493) / 08  
Income Tax GIR No : TIN-714-100-6858/circle-237 (ass. 2016-17)  
Trade License No : 041091  
Address : Anzak Rabeka Villa (Level-5)  
183/6, West Agargaon, 60 Feet Main Road  
Mirpur, Dhaka-1216  
Phone : +8801715008191 (mobile)  
E-mail : [creativenconsulting.bangladesh@gmail.com](mailto:creativenconsulting.bangladesh@gmail.com)  
Website : [www.creativeconsulting-bd.com](http://www.creativeconsulting-bd.com)  
Name of Bank : Dutch Bangla Bank Ltd,  
Mirpur-1 Branch, Dhaka

Pictorial view of CCIL Office/Workstation:



# Global Experience of Creative Consultants International Ltd





# OUR Areas of Expertise & Services

Creative Consultants International Limited, a multi-disciplinary consulting firm in Bangladesh, has been offering consulting services since 2008. Over the last 14 years, the firm gathered experiences in different fields, working in home and abroad. It has a track records and successfully completed development projects in Bangladesh. Our broad range of clients includes national and regional governments, international organisations, NGOs and public and private sector entrepreneurs.

## Our areas of expertise

- Monitoring, Evaluation and Learning
- Agriculture and Rural Development
- Forestry, Fisheries and Livestock
- Irrigation and Water Management
- Infrastructure and Engineering development
- Rural Water Supply and Sanitation
- Health, Nutrition and WASH
- Power and Energy
- Land Reclamation and Soil Conservation
- Trade and Commerce
- Human Resources Development (HRD)
- Disaster Management Services
- Environment and Climate Change
- International Training and capacity Building
- Information and Communication Technology and e-Governance
- Digital Marketing
- Printing and Publications



## Our services

- Agro and Socio-economic Research and Studies
- Project Planning, Monitoring and Evaluation
- Impact Evaluation Study
- In-depth Monitoring
- Mid-term/Final Evaluation
- Feasibility study
- Baseline Studies
- Water, Sanitation and Hygiene studies
- Environmental Impact Assessment
- Training and Capacity building for international development
- ICT consultancy
- Web design and development
- Web hosting and domain registration
- Designing, printing and publications and branding





# Agriculture & Rural Development

Agriculture and Rural Development is the main sector of CCIL. The initial years of CCIL saw it get deeply involved in the agricultural and rural development consulting services in the country. CCIL has effectively and efficiently completed a substantial number of projects under this sector. The process is still on and CCIL is continuing to extend consultation service in the areas of:



Creative Consultants offers expertise in the following fields of activities:

- ▶ Monitoring and Evaluation;
- ▶ Irrigation, drainage, and water resources management for agricultural development;
- ▶ Participatory Water Resources Management;
- ▶ Capacity Building;
- ▶ Surveys, investigations and reconnaissance studies
- ▶ Project Identification;
- ▶ Supply Chain/Value Chain Development;
- ▶ Techno-Economic Analysis and Feasibility Studies; and
- ▶ Management and Training Advice.

Creative Consultants believes in team work and an integrated approach involving Engineers, Agronomists, Aqua-culturists, Economists, Sociologists, Environmentalists, Extension Personnel, Credit Specialists and many other specialists for making a project success.



# Performance, Monitoring and Evaluation

Our approach to improved performance management of organization and translate thinking in terms of inputs and outputs into effective consideration of outcomes and impact. The firm has a well qualified team of experts who have considerable experience and expertise in the following areas:

## ***Monitoring and Evaluation Frameworks***

The firm provides consulting services for the purpose of monitoring and evaluating the progress of projects from initial project and programme planning through to post-implementation review. The firm also work to analyze trends throughout the implementation process, promoting systematic project management in order to reduce risks, under-performance or failure. Through introduction of new information technology techniques into the field of monitoring and evaluation in the development sector.

## ***Benchmarking***

Benchmarking can be understood as a systematic process of evaluating performance, undertaken by comparing existing performance in specific areas to appropriate best practices in order to identify possible improvement. It helps to analyzing the areas for improvement and development the of management strategies.

## ***Project Reviews, Mid-Term Evaluation and Assessment***

Our approach to evaluations and assessments mainly integrates the following:

- ▶ Defining standards against which programmes are to be evaluated;
- ▶ Investigating the performance of the selected activities / processes to be evaluated based on these standards;
- ▶ Synthesizing the results of this analysis;
- ▶ Formulating recommendations; and
- ▶ Providing advice on implementation of recommendations and programme review action plans.

## ***Research and Knowledge Management***

CCIL has been carried out assessments, research studies, best practicing of documentation in a diverse range of the sectors. It has strong competence in carrying out field research and action research integrating participatory methods.

Our approach to carrying out research and development studies are based on:

- ▶ Identifying the assessment parameters;
- ▶ Developing the research framework based on the parameters;
- ▶ Identifying the most suitable methodology for data collection, information gathering and desk research;
- ▶ Ensuring appropriate sampling and representation;
- ▶ Carrying out in-depth analysis;
- ▶ Presenting findings and outcomes in a structured, useful manner;
- ▶ Give the importance of lesson learning, identifying best practices for scaling up and replication of successful development interventions.

CCIL places important emphasis on knowledge management including documentation, learning and sharing experiences as well as developing knowledge portal and learning systems.



# Socio-economic Studies and Research

Availability of reliable information is a prerequisite of good planning for any development initiative. Generation of reliable data is thus very important. CCIL has extensive experiences in socio-agro-economic surveys, and it has longstanding reputation of generating quality data. It has a strong portfolio experienced social scientists and agronomists, who supervise and guide the enumerators in the field surveys. The firm has a well qualified and experienced team of experts in the following socioeconomic research and studies:

- ▶ Baseline Survey
- ▶ Impact Evaluation
- ▶ Project Assessment
- ▶ Performance Evaluation
- ▶ Project Reviews
- ▶ Mid-Term Evaluation
- ▶ Project End line survey
- ▶ Stakeholder analysis
- ▶ In-depth monitoring
- ▶ Feasibility study



# Water and Sanitation

Creative Consultants provides technical assistance and support for developing and implementing strategies for water and sanitation projects. The team's support strategy development, monitoring and implementation of activities at the field level.



Creative Consultants offers expertise and experience in the following fields:

- ▶ Rural Water and Sanitation;
- ▶ Water Resources Studies, Water Master Plan;
- ▶ Feasibility Studies, Rural and Urban Water;
- ▶ Supply and Industrial Water Supply etc.;
- ▶ Domestic and Industrial Waste Water Treatment;
- ▶ Solid Waste Management;
- ▶ Sewerage and Urban Drainage Management
- ▶ Soil and Groundwater Pollution; and
- ▶ Environmental Policies and Management Plans.

# Infrastructure, Roads and Transportation Communication

Creative Consultant's services are comprehensive and experience team consisting of engineers, architects, traffic engineer, transport planning & modeling engineer, traffic impact analyst, environmental and planning regulations experts, municipal civil engineers, surveyors, project managers, construction supervisors, material specialists, accountants, estimators, attorneys, and other experienced construction professionals. The team provides consulting services including project management, evaluation of construction claims, critical path method (CPM) scheduling, facilities of the concerned personnel.



Creative Consultants provides the following consultancy services:

- ▶ Architecture and Planning;
- ▶ Transportation Planning including Traffic;
- ▶ Origin-Destination Survey;
- ▶ Pre-feasibility and Feasibility Studies;
- ▶ Transportation Related Training;
- ▶ Highway Planning and Programming;
- ▶ including Rural Feeder Roads;
- ▶ Site Selection and Land Use/Environmental Studies;
- ▶ Improvement and Reconstruction of Roads including Primary, Secondary and Rural Feeder Roads and Access Tracks;
- ▶ Design and Engineering of Roads, Bridges, Appurtenant Structures;
- ▶ Financial Analysis, Costing and Tariffs;
- ▶ Quality Control of Construction and Supervision;
- ▶ Development impact studies, planning, design and implementation of rural infrastructure e.g. markets, culverts / bridges and rural roads for connectivity including environmental and social impact assessment and monitoring and evaluation;
- ▶ Structure and master planning, detailed area planning, urban infrastructure planning and feasibility studies, detailed engineering and construction supervision with social and community development and environmental management.



# Forestry, Environment and Disaster Management

Creative Consulting offers expertise and experience in the following fields:

- ▶ Environmental Management;
- ▶ Social Environmental Assessment;
- ▶ Climate Changes & Adaptation;
- ▶ Environmental Surveys and Impact Assessment;
- ▶ Environmental Policies and Management Plans;
- ▶ Environmental Impact Assessment (EIA);
- ▶ Climate resilient Infrastructure Planning; and
- ▶ Climate adaptation studies & Planning.



# Education and Skill Development

As economies strive to grow, we support developing countries in accelerating economic growth and social development by helping build links between education and practical skills training. We see education and skills development as an enabler and driver of inclusive and sustainable development. Our services include high level policy interventions, capacity building, institutional strengthening and programme design, management, implementation and research.

We have successfully undertaken projects at all stages of the education cycle and our work has covered the primary and tertiary sectors, vocational education and training and inclusive education. CCIL completed a substantial number of education projects in the following areas:

- ▶ Teaching quality improvement
- ▶ Impact study of female stipend programme
- ▶ Monitoring and Tracer Study
- ▶ Evaluation of Primary and Secondary Education
- ▶ Vocation Training
- ▶ Programme Planning and Capacity of Education Sector



# Information and Communication Technology

Creative Consultants International has been providing ICT consultancy services both in home and abroad since 2008. The firm is providing the following services:

- IT support to the corporate level organization and development projects
- Website design, development and maintenance;
- Website hosting and domain registration;
- Graphic design;
- Multimedia development;
- Offset print;
- Training module and communication materials design;
- Branding and promotional materials design and supply (i.e. T-shirt, cap, umbrella, pen, bag, folder, digital banner, mug);
- Social media and web presence (Facebook, YouTube, LinkedIn, Instagram, Twitter)
- Knowledge Management.



# Training and Capacity Building

Creative Consultants has been conducting national and international training and conference in partnership with IMI Australia, PME Academy and SfED, New Zealand.

Creative Consultants has international experts and provides international training on Monitoring & Evaluation, Impact Measurement and M&E capacity development through our M&E courses, workshops and seminars.



# Printing & Publication

Creative Consultants in association PrincomBangladesh provide Designing and Offset printing services to various projects and research institutes.

- Graphic Design
- Pre-press processing
- Offset printing
- Design and supply of promotional items



# COMPANY Management

The management of the firm is vested in a Board of Directors. The Managing Director maintains the day-to-day affairs of the firm in close consultation with the Directors and with the assistance of the manager and supporting staff. Directors are highly professionals and with long experience in respective consultancy services. They also look after the technical, advisory and administrative activities of the firm.

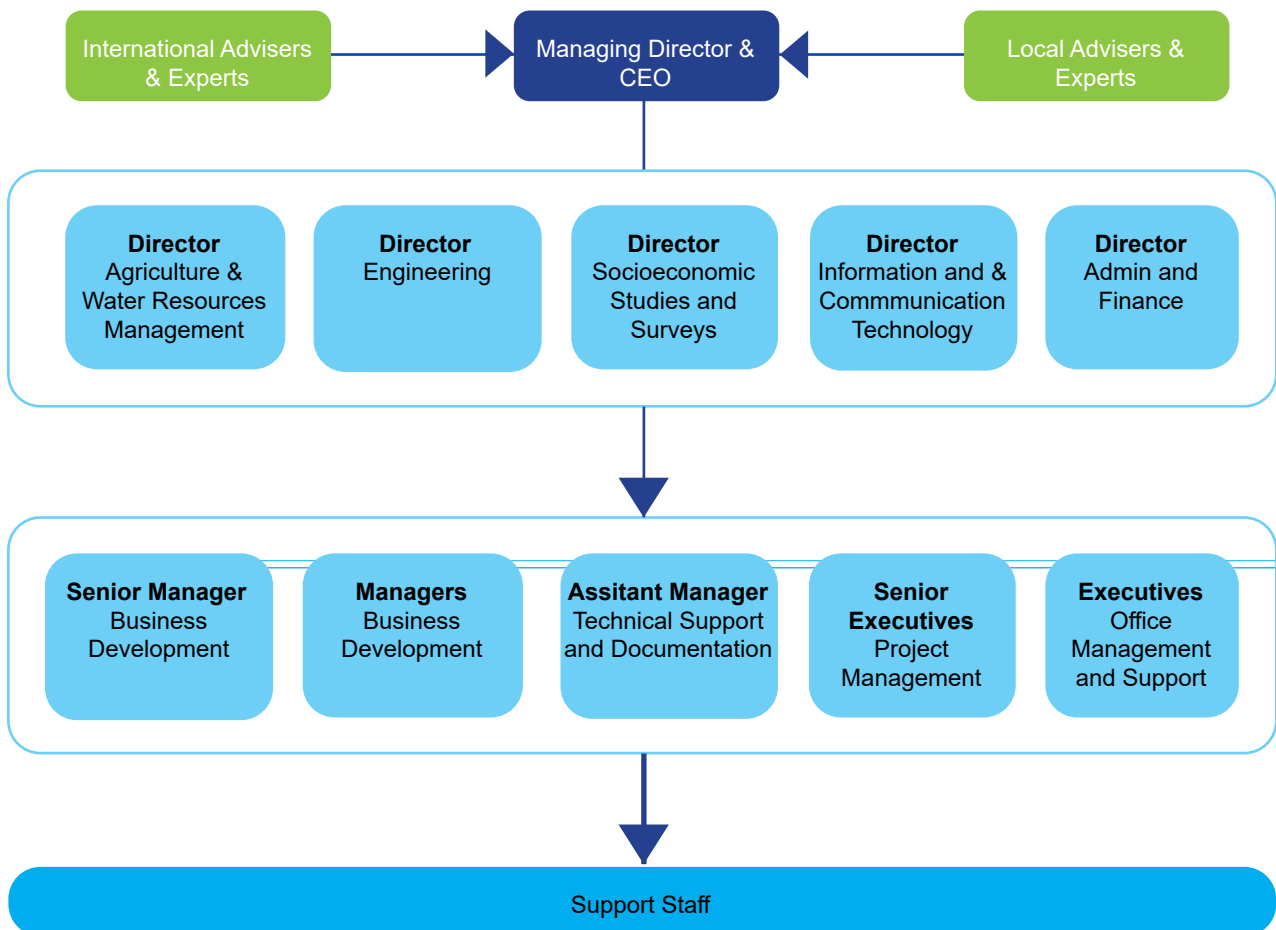
## Board of Directors

Md. Abdul Mannan  
Israt Jahan Fancy

- Managing Director and CEO
- Director

## Organizational Structure

### Organogram



# COMPANY

## Strength and Capabilities

### Facilities available with the Firm

Creative Consultants has a full functional office located at 183/6, Anzek Rabeka Villa, Level-5, West Agargaon, 60 Feet Main Road, Mirpur, Dhaka, Bangladesh. It has also corporate office at Dipti Palace, House 151/1-D, Jonaki Road, Ahmed Nagar, Mirpur-1, Dhaka-1216. Both the offices are well equipped with all modern computer and communication facilities.

### Logistics Facilities

Desktop Computer	:	12 Nos
Laptop	:	4
Notebook	:	1
Laser Printer	:	2
Colour Printer	:	2
Scanner	:	1
Photocopier	:	1
iPad	:	1
Air Conditioner	:	2
Mobile Phones	:	6
Office Space	:	1500 sft
Internet	:	High speed broadband connection with Wifi router
Web server	:	100 GB USA based dedicated web server

### Financial Strength

Creative Consulting International Limited (CCIL) is financially solvent and maintaining a current account which is below:

CREATIVE CONSULTANTS INTERNATIONAL LTD  
 DUTCH BANGLA BANK LTD  
 MIRPUR-1 BRANCH, DHAKA-1216  
 A/C NO: 115-110-0030090

### Capabilities of the Firm

The firm has already completed a good number of consulting assignments in home and abroad. A considerable number of consultants/experts along with a pool of highly qualified senior advisers in various disciplines have been working with the firm and its' partners for a long time. The team members are well-renowned specialists having Ph.D degrees on the respective field.

Creative Consultants has own office with modern facilities including Computers, Printers, Photocopiers, Scanners, Telephone, Fax, Internet Facilities, Transports, Computer Programmers, Statisticians, Data Analysts, Data Entry Operators and Enumerators. Creative Consultants is able to provide consulting services efficiently and effectively.



# COMPANY

## Clients & Partners

### Clients



এলজিইডি



### Partners

1. Agristudio S.R.L, Italy;
2. BioDiversity International Ltd, UK;
3. e.Gen Consultants, Bangladesh;
4. Engineering and Planning Consultants Ltd (EPC), Bangladesh;
5. JPZ (Consultants Bangladesh) Ltd;
6. HV Associates, Bangladesh;
7. IMA International, UK;
8. Impact Management International, Australia;
9. KECC, Korea;
10. Project Planning Management, Bulgaria;
11. Operations Research Group, India;
12. PME Academy, Australia;
13. Services and Solutions International Ltd, Bangladesh;
14. Socioconsult Ltd, Bangladesh;
15. Technoconsult International Ltd, Bangladesh;
16. The Environment and Resource Analysis Centre Ltd (ENRAC), Bangladesh;
17. The Green Infrastructure Consultancies, Bangladesh;
18. The Sunjin Engineering Company Ltd, Korea;
19. The Voyents Solutions Private Ltd, India;
20. Uniconsult International Ltd, Bangladesh; and
21. Sher-e-Bangla Agriculture University, Bangladesh.

# COMPANY

## Major Project Experience

1. MoA-DAE-BARI: **In-depth Evaluation of “Research, Development and Extension of Cashew Nut and Coffee Project of DAE-BARI**, assigned by IMED, Ministry of Planning (10 Dec - 07 Apr 2024)
2. IMED-LGED-GbB: **Impact Evaluation of Coastal Climate Resilience Infrastructure Project (2nd Revised)** assigned by IMED, Ministry of Planning (16 February - 15 June 2023)
3. FSP&CD Project (funded by WB), Planning Commission, Ministry of Planning: **Preparing Sector Action Plan on “Agriculture: Crops, Forestry, Fisheries, Livestock, Water Resources & Irrigation”** (October 2020 - December 2021)
4. BRRI-MoA-GoB: **Development and Management of Bangladesh Rice Knowledge Bank (BRKB)** (2004 - ongoing)
5. CPTU/IMED-GoB: **Evaluation of the Effectiveness of Digital Services Provided by Different Ministry/ Division and their Department/Agencies** under IMED-CPTU, Planning Commission, Bangladesh (March-June 2022)
6. BRDB-GoB: **Feasibility Study of Production and Marketing of Minor Crops at Nutritious High Prices to Alleviate Poverty”** under Bangladesh Rural Development Board (BRDB) (Mar-Apr 2023)
7. IMED-BRDB-GoB: **Conducting In-depth Monitoring of Production and Marketing of Minor Crops at Nutritious High Prices to Alleviate Poverty”** under Bangladesh Rural Development Board (BRDB) (January-May 2022) (on-going)
8. LGSP-3-LGD-WB-GoB: **Impact Evaluation Study and Preparation, Printing and Publication of Good Practice Compendium** under the LGSP-3 Project (on-going)
9. FSP&CD Project (funded by WB), Planning Commission, Ministry of Planning: **“Preparing Livestock Sub-sector Action Plan”** (October 2021 - June 2022)
10. LGED-IMED-GoB: **In-depth Monitoring of Important Rural Infrastructure Development Project on Priority Basis (IRIDP-2)**, (January 2021 - June 2021)
11. LGED-IMED-WB: **In-depth Monitoring of Municipal Governance and Services Project**, IMED, Ministry of Planning (April-May 2020)
12. IMED-DAE-ADB: **Impact Evaluation of Second Crop Diversification Project (2nd Phase)**, IMED, Ministry of Planning (April-May 2020)
13. IMED-GoB-JICA: **In-depth Monitoring of Karnafuly Water Supply Project**, IMED, Ministry of Planning (April-May 2020) (JV)
14. IMED-GoB: **In-depth Monitoring of Small Scale Irrigation Project in Noakhali, Feni and Laxmipur Districts**, IMED, Ministry of Planning (April-May 2020) (JV)
15. European Union: **Ex-post Evaluation of “Sundarbans Environmental and Livelihoods Security (SEALS)” FWC SIEA 2018 – LOT 1: “Sustainable Management of Natural Resources and Resilience” ACA/2019/404-715** (March-May 2019)



# COMPANY

## Professional Team (and part-time consultants)



**Dr Md. Yusuf Ali**  
Agronomist and Former PSO, BARI  
40 years experience



**Dr Md. Abdul Ghani**  
Irrigation Engineer  
Former CSO and Head Irrigation Department, BARRI  
**Irrigation Specialist**



**Dr Md. Abdur Rashid**  
Irrigation and Ground Water Management Specialist  
and Former CSO, BARRI  
**Water Resources Management Specialist**  
36 years experience



**Dr Mohi Uddin**  
Horticulture Specialist  
Former, Director, Pulse Research Centre & CSO, BARI  
Agricultural scientist with over 34 years of  
experience, specializing in farming systems research  
and development, vegetables and vegetable seed  
production



**Dr F I M Golam Wahid Sarker**  
Agricultural Economist  
Former CSO, Economic Division, BARRI  
**Agro-economist & Coordinator**  
Has 35 years experiences



**Md. Yunus Ali**  
Forest and Environment Specialist  
Former Chief Conservator of Forest  
Forest Department  
35 years experience



**Dr. Nowsher Ali Sarder**  
Ph.D in Agronomy  
Agriculture Extension Specialist  
38 years experience



**Hasan Ahmed Chowdhury**  
Former Director Planning  
Department of Fisheries  
**Fisheries Specialist**  
35 years experience



**Mohammad Rashed Mahbub**  
M.Sc. in Information Technology  
ICT and Network Specialist



**Dr Apurba Deb Roy**  
Socioeconomic Research Specialist  
and Adviser of the company



**Kamal Uddin Ahmed**  
M.Sc in Computer Science and Engineering  
ICT Specialist  
16 years experience working in national and  
international organization and development  
projects



**Md. Abul Kashem**  
Communication Specialist & Professional Editor  
Former Head of Publications Department  
Bangladesh Rice Research Institute (BRR)  
Gazipur  
Masters in Arts (Major: Mass Communication and  
Journalism: Advanced Reporting, Advanced  
Editing

# COMPANY

## Board of Directors



**Md. Abdul Mannan**  
Managing Director and CEO



**Israt Jahan Fancy**  
Director



Creative Consultants International Limited

multi-disciplinary consulting firm

**OFFICE ADDRESS:**

Anzak Rabeka Villa (Level-5)  
183/8 ,South Pererbagh, 60 Feet Main Road, Dhaka-1216

Mobile: +880 171 500 8191  
E-mail: [creativeconsulting.bangladesh@gmail.com](mailto:creativeconsulting.bangladesh@gmail.com)  
Website: [www.creativeconsulting-bd.com](http://www.creativeconsulting-bd.com)